

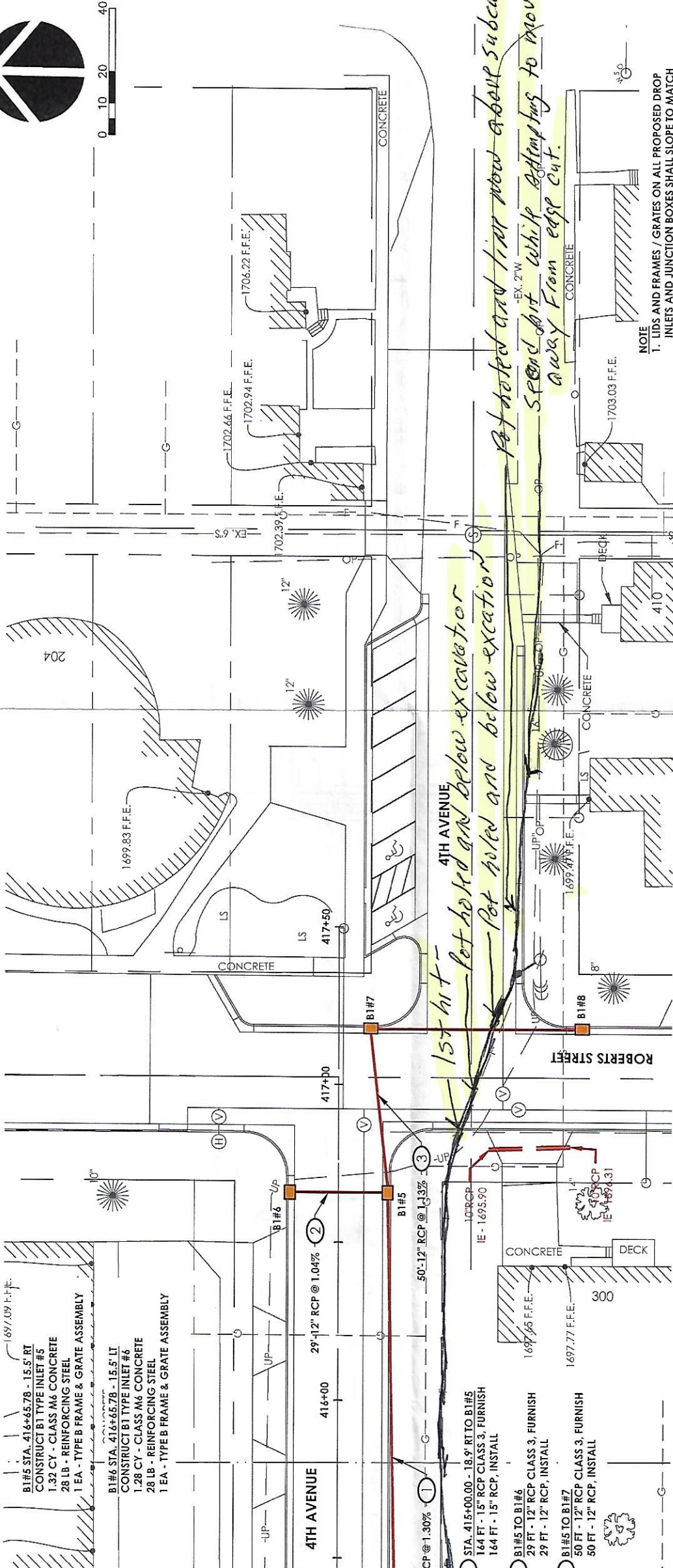
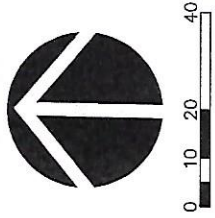
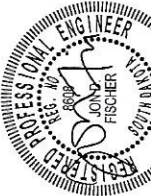


STOCKWELL
 STOCKWELL ENGINEERS, INC.
 801 N. PHILLIPS AVE., SUITE 100
 SIOUX FALLS, SD 57104
 PH: 605.338.6668
 FAX: 605.338.8760

HUMBOLDT
 SOUTH DAKOTA

2019 STREET AND UTILITY IMPROVEMENTS
4TH AVENUE
 HUMBOLDT, SOUTH DAKOTA

SEE PROJECT # 18213



NOTE
 1. LIDS AND FRAMES / GRATES ON ALL PROPOSED DROP INLETS AND JUNCTION BOXES SHALL SLOPE TO MATCH PROPOSED STREET GRADES.

416+66 CROSSING

1700	1700	1700	1705	1700
1695	1695	1695	1710	1710
1690	1690	1690	1715	1715
1685	1685	1685	1720	1720

STA. 416+65.78 - 15.50'RT B1 #5 (4.57' DEEP) RIM - 1696.07 INV. (E)(12'') - 1691.50 INV. (N)(12'') - 1691.50 INV. (W)(15'') - 1691.50	STA. 416+65.78 - 15.50'LT B1 #6 (4.24' DEEP) RIM - 1696.04 INV. (S)(12'') - 1691.80
--	--

STA. 416+65.78 - 15.50'RT B1 #5 (4.57' DEEP) RIM - 1696.07 INV. (E)(12'') - 1691.50 INV. (N)(12'') - 1691.50 INV. (W)(15'') - 1691.50	STA. 417+17.78 - 10.00'RT B1 #7 (4.52' DEEP) RIM - 1696.58 INV. (S)(12'') - 1492.06 INV. (W)(12'') - 1492.06
--	--

STA. 416+65.78 - 15.50'RT B1 #5 (4.57' DEEP) RIM - 1696.07 INV. (E)(12'') - 1691.50 INV. (N)(12'') - 1691.50 INV. (W)(15'') - 1691.50	STA. 417+17.78 - 10.00'RT B1 #7 (4.52' DEEP) RIM - 1696.58 INV. (S)(12'') - 1492.06 INV. (W)(12'') - 1492.06
--	--

Handwritten notes on table:
 - "Midco cable" with arrow pointing to 1695 level
 - "Excavation" with arrow pointing to 1690 level
 - "Pot holed" with arrow pointing to 1690 level
 - "Retained" with arrow pointing to 1685 level
 - "28.8' - 12" RCP @ 1.04%" with arrow pointing to crossing structure